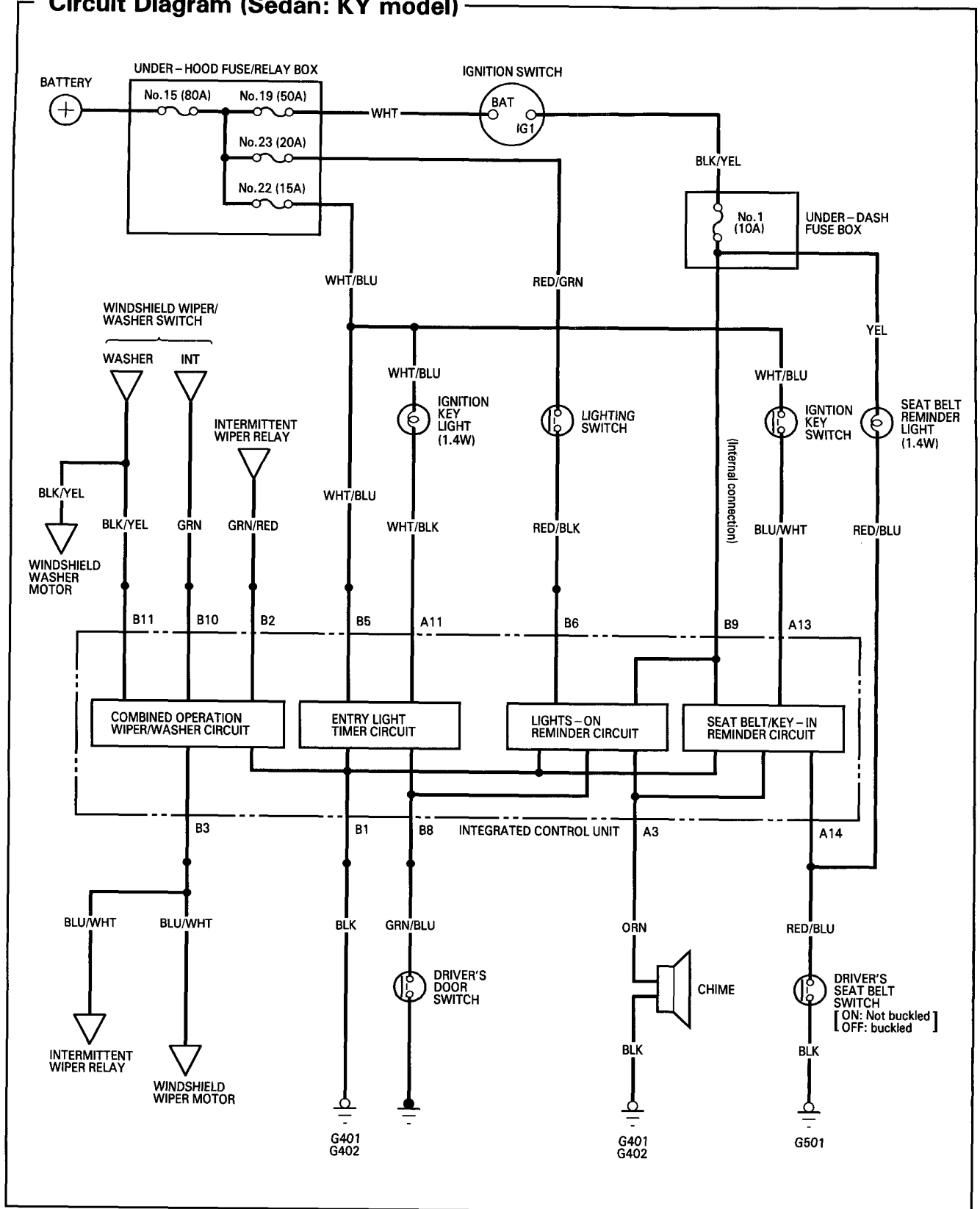


Integrated Control Unit

Circuit Diagram (Sedan: KY model)





Input Test (Sedan: KY model)

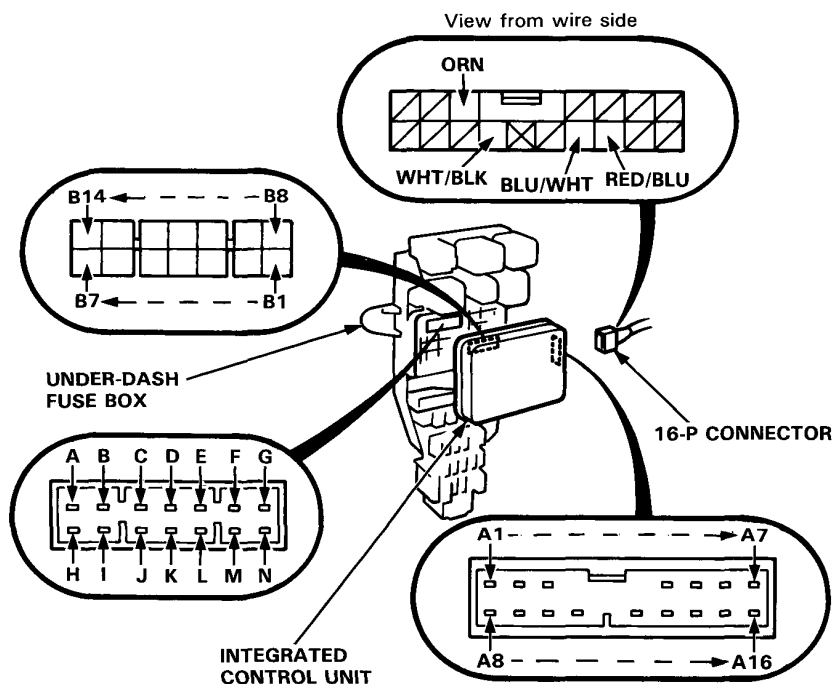
Remove the left kick panel, then disconnect the 16-P connector from the integrated control unit.

Remove the integrated control unit.

Inspect the connector and the socket terminals to be sure they are all making good contact.

- If the terminals are bent, loose or corroded, repair them as necessary, and recheck the system.
- If the terminals look OK, make the following input tests at the connector and the socket.
 - If a test indicates a problem, find and correct the cause, then recheck the system.
 - If all the input tests prove OK, the control unit must be faulty; replace it.

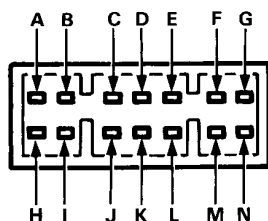
NOTE: Do not disconnect any connectors from the under-dash fuse box except the one on the integrated control unit.



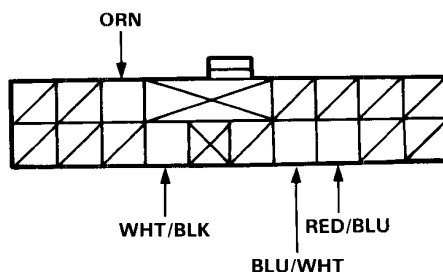
(cont'd)

Integrated Control Unit

Input Test (Sedan: KY model) (cont'd)



View from terminal side



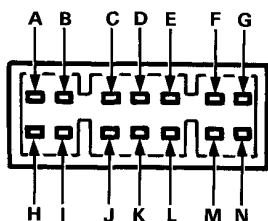
View from wire side

Entry Light Timer System:

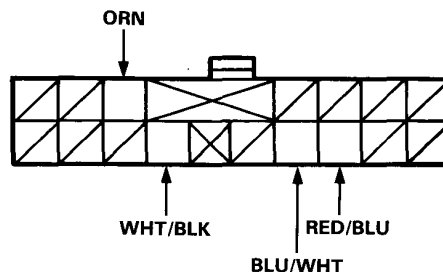
No.	Terminal	Test condition	Test: Desired result	Possible cause if result is not obtained
1	H	Under all conditions.	Check for continuity to ground: There should be continuity.	<ul style="list-style-type: none"> • Poor ground (G401, G402). • An open in the wire.
2	L	Under all conditions.	Check for voltage to ground: There should be battery voltage.	<ul style="list-style-type: none"> • Blown No. 22 (15 A) fuse. • An open in the wire.
3	WHT/BLK	Under all conditions.	Attach to ground: Ignition key light should come on.	<ul style="list-style-type: none"> • Blown bulb. • An open in the wire.
4	A	Driver's door open.	Check for voltage to ground: It should be 1 V or less	<ul style="list-style-type: none"> • Faulty driver's door switch. • An open in the wire.

Lights-on Reminder System:

No.	Terminal	Test condition	Test: Desired result	Possible cause if result is not obtained
1	H	Under all conditions.	Check for continuity to ground: There should be continuity.	<ul style="list-style-type: none"> • Poor ground (G401, G402). • An open in the wire.
2	M	Lighting switch ON (Second position).	Check for voltage to ground: There should be battery voltage.	<ul style="list-style-type: none"> • Blown No. 23 (20 A) fuse. • Faulty lighting switch. • An open in the wire.
3	B	Ignition switch ON.	Check for voltage to ground: There should be battery voltage.	<ul style="list-style-type: none"> • Blown No. 1 (10 A) fuse. • An open in the wire.
4	A	Driver's door open.	Check for voltage to ground: It should be 1 V or less.	<ul style="list-style-type: none"> • Faulty driver's door switch. • An open in the wire.
5	ORN	Ignition switch ON and connect the B terminal to the ORN terminal.	Check chime operation: Chime should activate each time the battery is connected.	<ul style="list-style-type: none"> • Faulty chime. • An open in the wire.



View from terminal side



View from wire side

Wiper System:

No.	Terminal	Test condition	Test: Desired result	Possible cause if result is not obtained
1	H	Under all conditions.	Check for continuity to ground: There should be continuity.	<ul style="list-style-type: none"> • Poor ground (G401, G402). • An open in the wire.
2	I	Ignition switch ON.	Check for voltage to ground: There should be battery voltage.	<ul style="list-style-type: none"> • Blown No. 6 (30 A) fuse. • Faulty intermittent wiper relay. • An open in the wire.
3	C	Ignition switch ON and wiper switch in INT Position	Check for voltage to ground: There should be battery voltage.	<ul style="list-style-type: none"> • Blown No. 6 (30 A) fuse. • Faulty wiper switch. • An open in the wire.
4	D	Ignition switch ON and washer switch ON	Check for voltage to ground: There should be battery voltage.	<ul style="list-style-type: none"> • Blown No. 6 (30 A) fuse. • Faulty washer switch. • An open in the wire.
5	J	Ignition switch ON.	Check for voltage to ground: There should be battery voltage.	<ul style="list-style-type: none"> • Blown No. 6 (30 A) fuse. • Faulty intermittent wiper relay. • Faulty windshield wiper motor. • An open in the wire.

Seat Belt Reminder System:

No.	Terminal	Test condition	Test: Desired result	Possible cause if result is not obtained
1	H	Under all conditions.	Check for continuity to ground: There should be continuity.	<ul style="list-style-type: none"> • Poor ground (G401, G402). • An open in the wire.
2	B	Ignition switch ON.	Check for voltage to ground: There should be battery voltage.	<ul style="list-style-type: none"> • Blown No. 1 (10 A) fuse. • An open in the wire.
3	ORN	Ignition switch ON and connect the B terminal to the ORN terminal.	Check chime operation: Chime should activate each time the bat- tery is connected.	<ul style="list-style-type: none"> • Faulty chime. • An open in the wire.
4	RED/BLU	Driver's seat belt is not buckled.	Check for voltage to ground: It should be 1 V or less.	<ul style="list-style-type: none"> • Faulty driver's seat belt switch. • An open in the wire. • Poor ground (G501). • Blown bulb.
		Driver's seat belt is buckled.	Check for voltage to ground: There should be battery voltage.	<ul style="list-style-type: none"> • Faulty driver's seat belt switch. • An open in the wire. • Blown bulb. • Blown No. 1 (10 A) fuse.
5	BLU/WHT	Ignition key is in- serted into the igni- tion switch.	Check for voltage to ground: There should be battery voltage.	<ul style="list-style-type: none"> • Faulty ignition key switch. • An open in the wire.